



---

Project:

**Pnielkerk**

26 04 2010

---

**mama-architecten**  
Marchel Ruygrok Vincent Jeanson

*plaats:*

*Scheveningen*

*opdrachtgever:*

*Reliplan*

*status:*

*Haalbaarheid studie*

---

# Pnielkerk

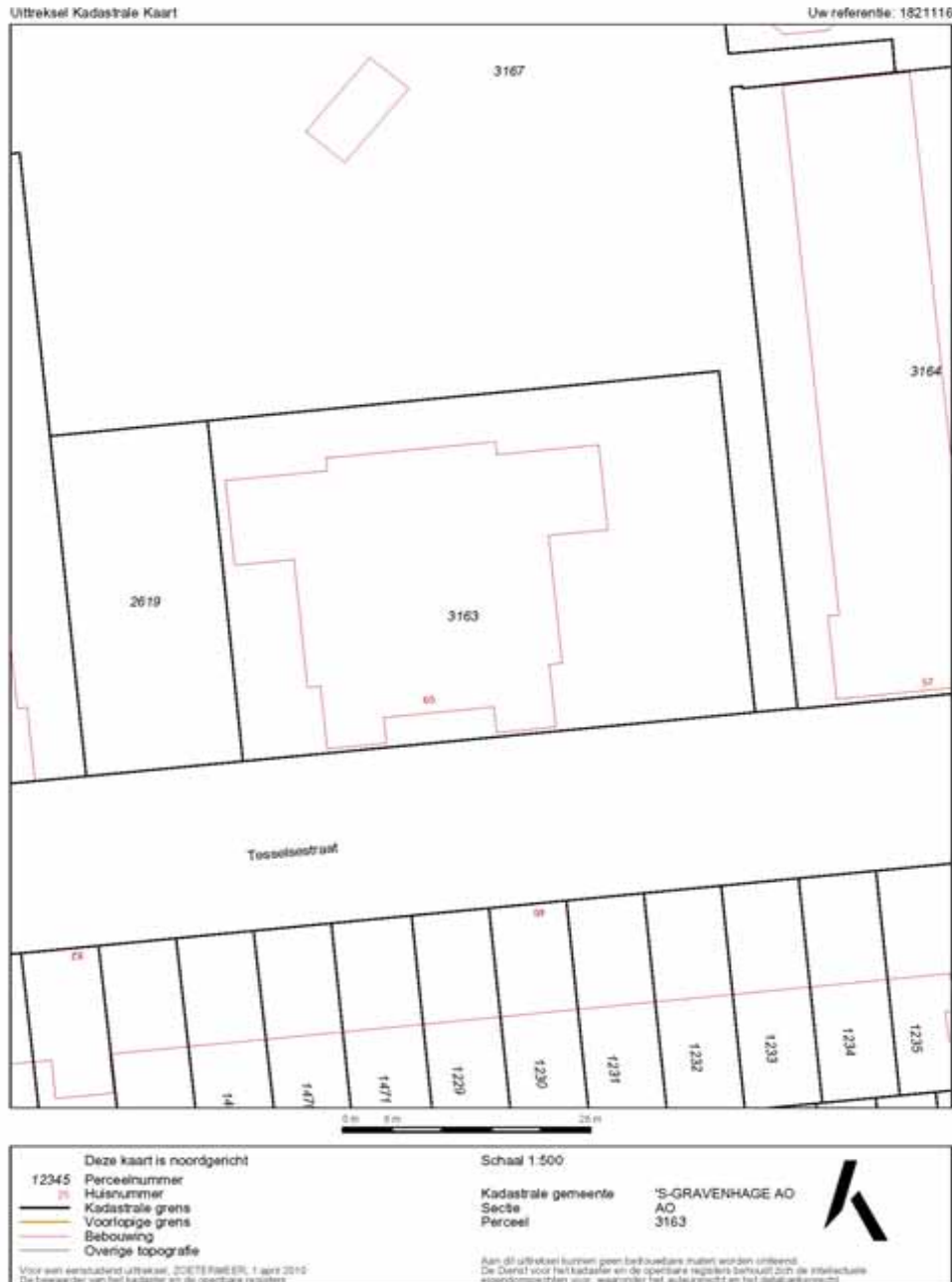
Een studie naar de herontwikkeling van de Pnielkerk te Scheveningen



# Uitreksel Kadestrale Kaart

status:

Studie



*Foto's*

*status:*

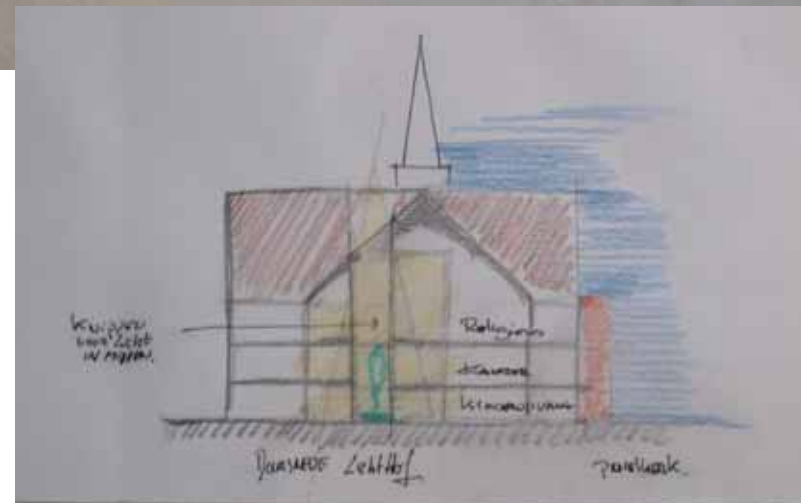
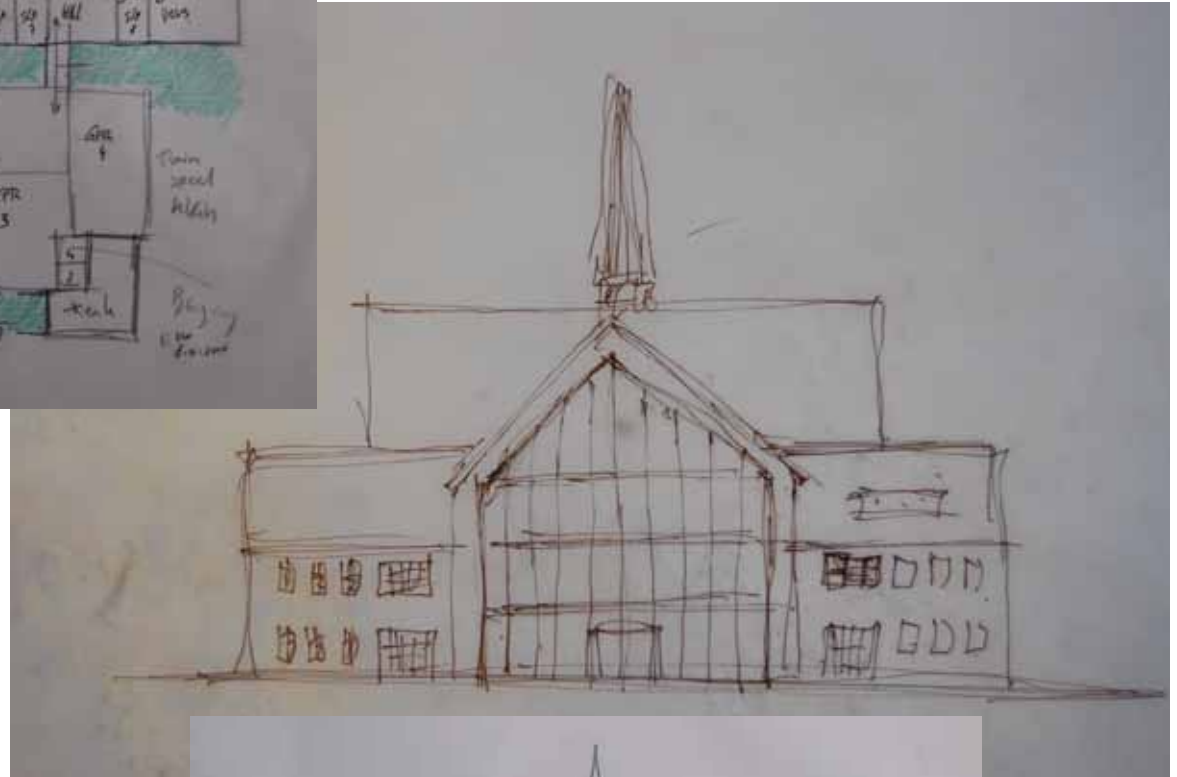
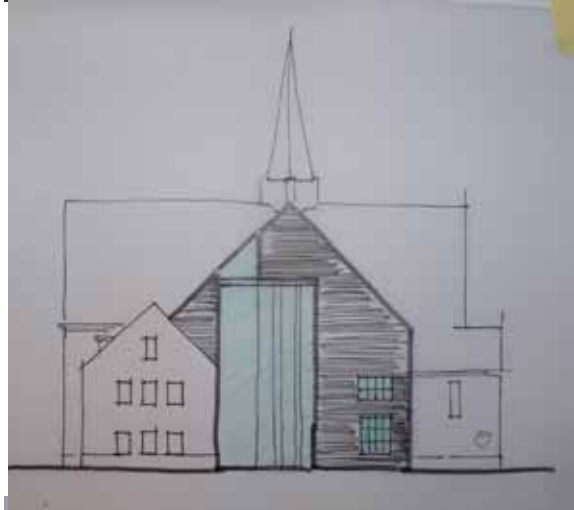
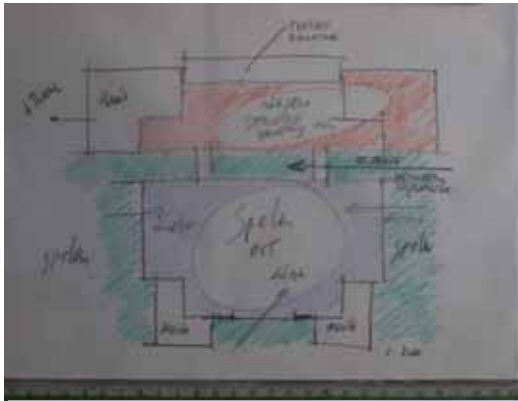
*Studie*



# Schetsen

status:

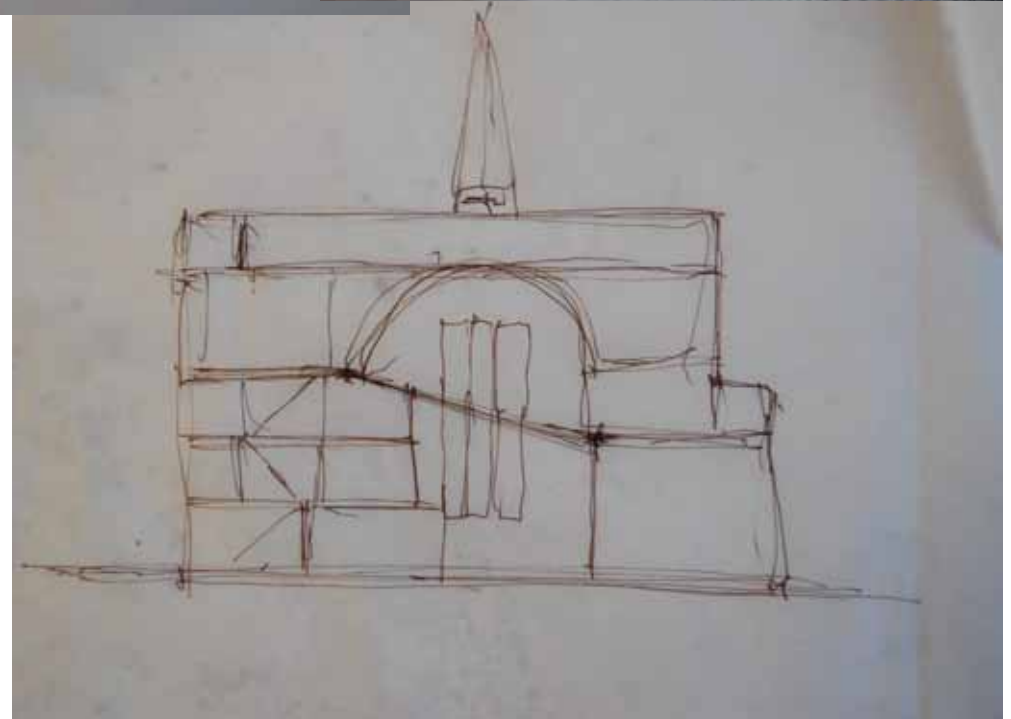
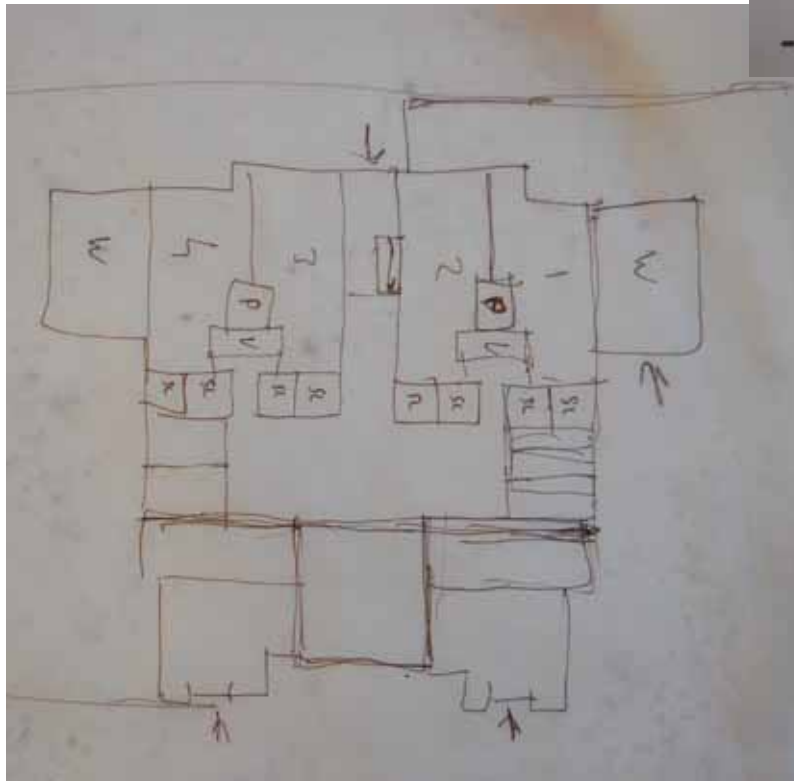
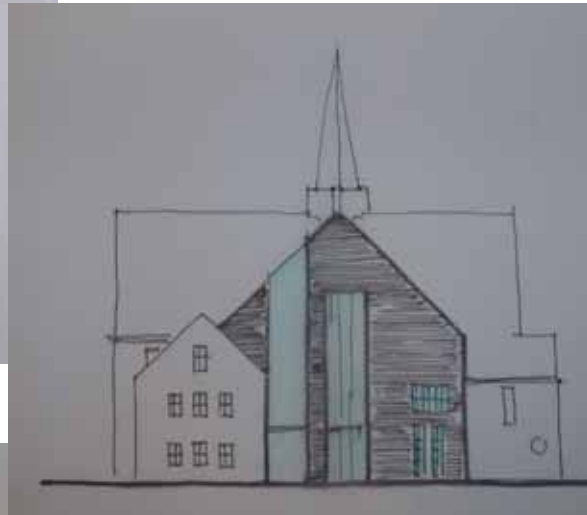
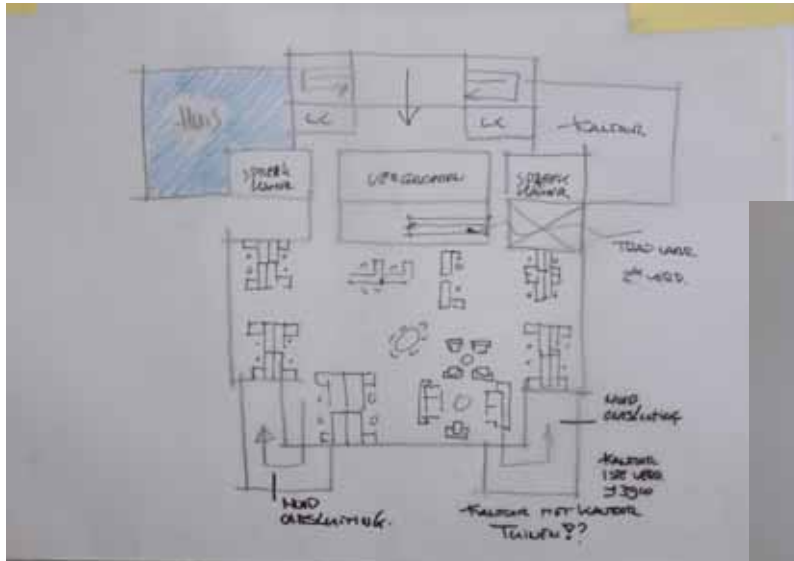
Studie

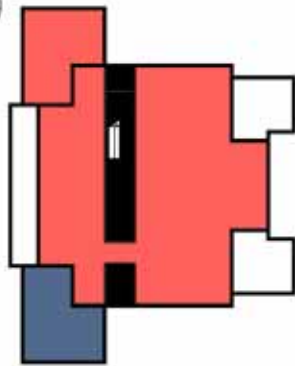


# Schetsen

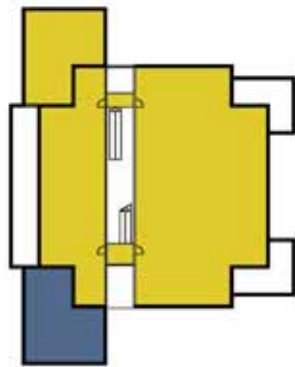
status:

Studie

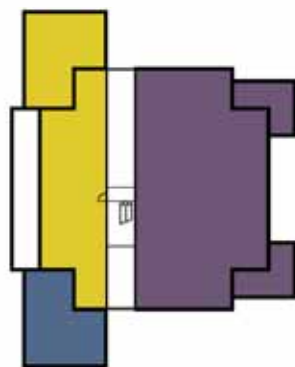




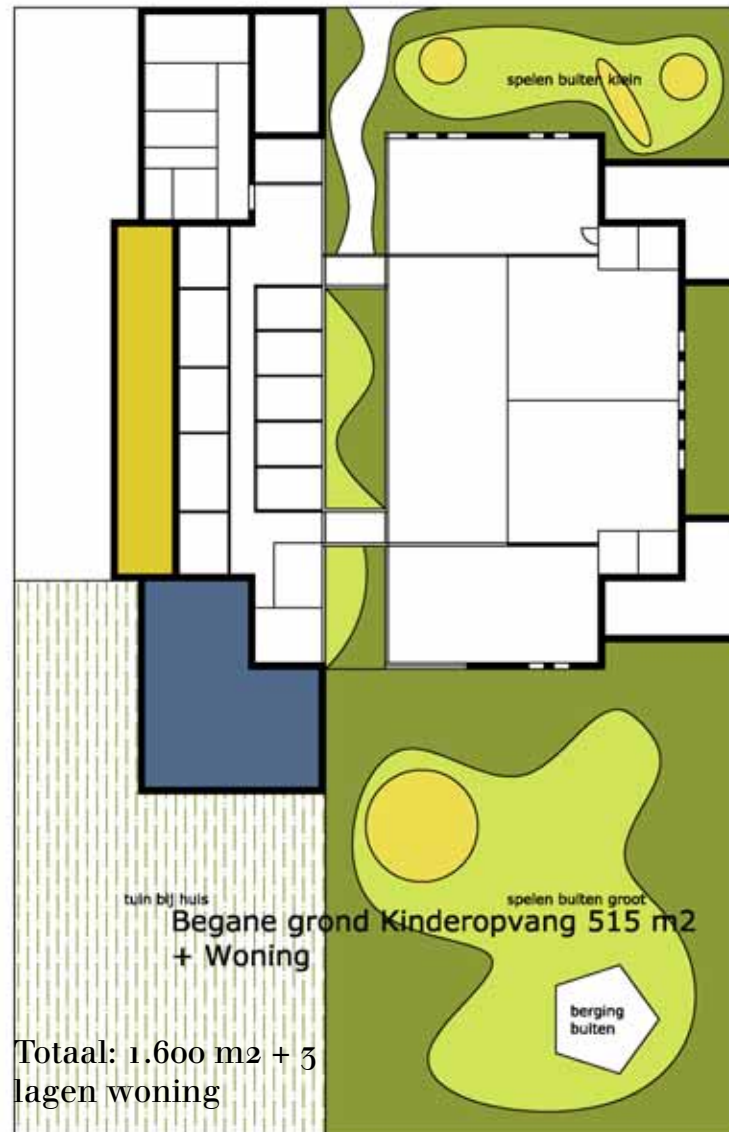
Begane grond Kinderopvang 515 m2  
+ Woning



1ste verdieping Kantoor 549 m2  
+ Woning



2de verdieping Kerk functie 370 m2  
Kantoor 215 m2  
+ woning



Totaal: 1.600 m2 + 3  
lagen woning

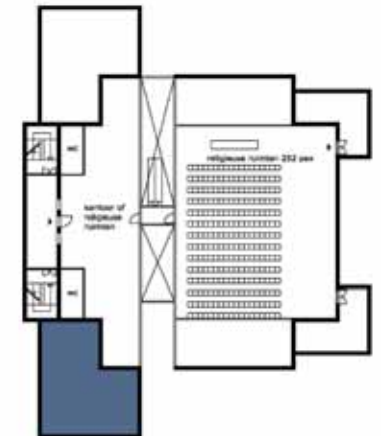
# Variant A

status:

Studie



1ste verdieping Kantoor 549 m2  
+ Woning

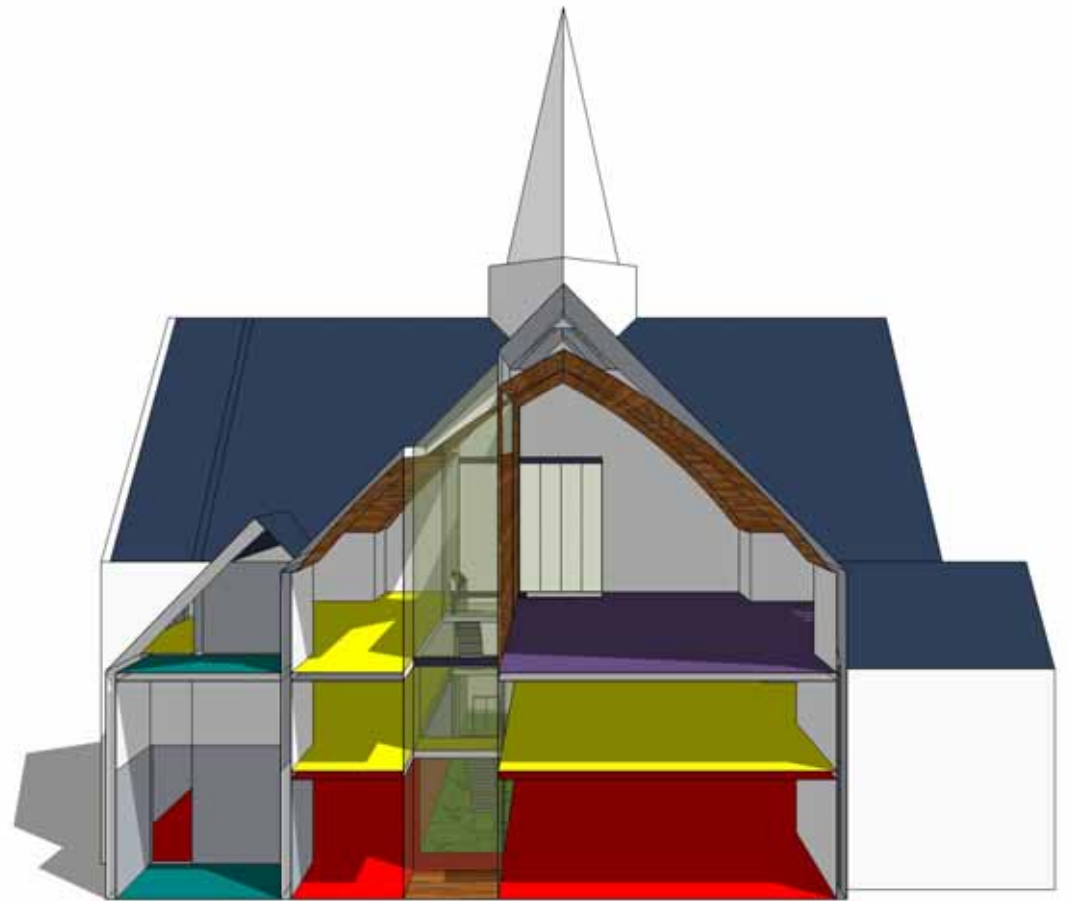
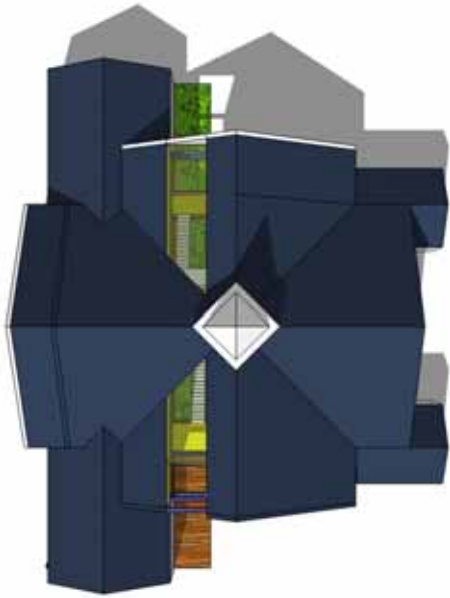


2de verdieping Kerk functie 370 m2  
Kantoor of religieuze functie 215 m2  
+ woning

*Variant A*

*status:*

*Studie*

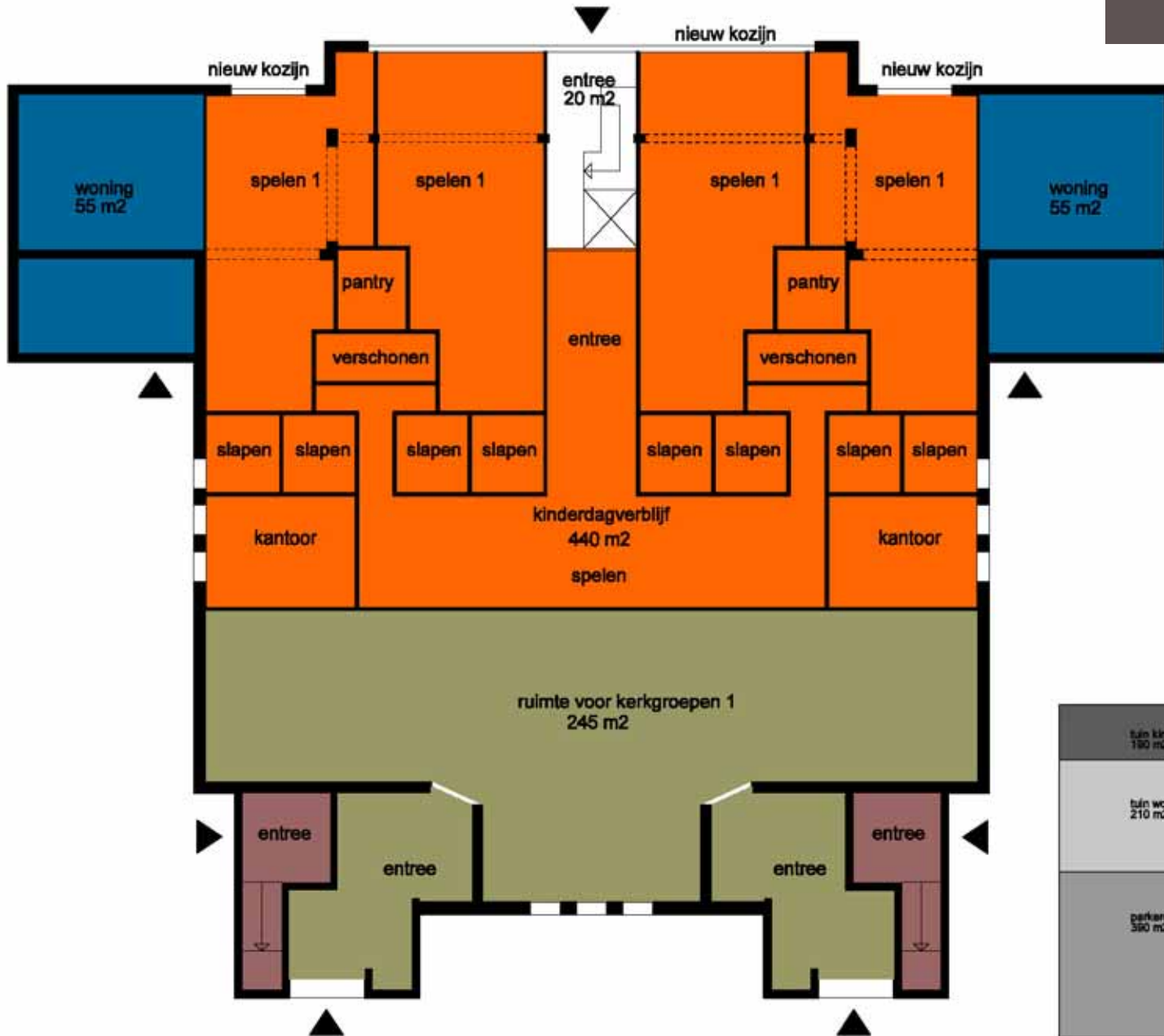


# Variant B Begane grond

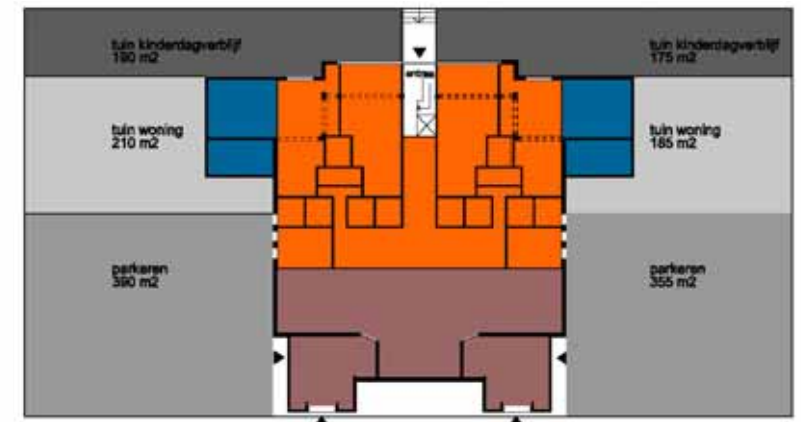
Schaal: 1:200

status:

Studie



entree	80 m <sup>2</sup>
kinderdagverblijf	440 m <sup>2</sup>
woningen	350 m <sup>2</sup>
sportschool	470 m <sup>2</sup>
kerk 1	730 m <sup>2</sup>
kerk 2	245 m <sup>2</sup>
<b>totaal</b>	<b>2315 m<sup>2</sup></b>

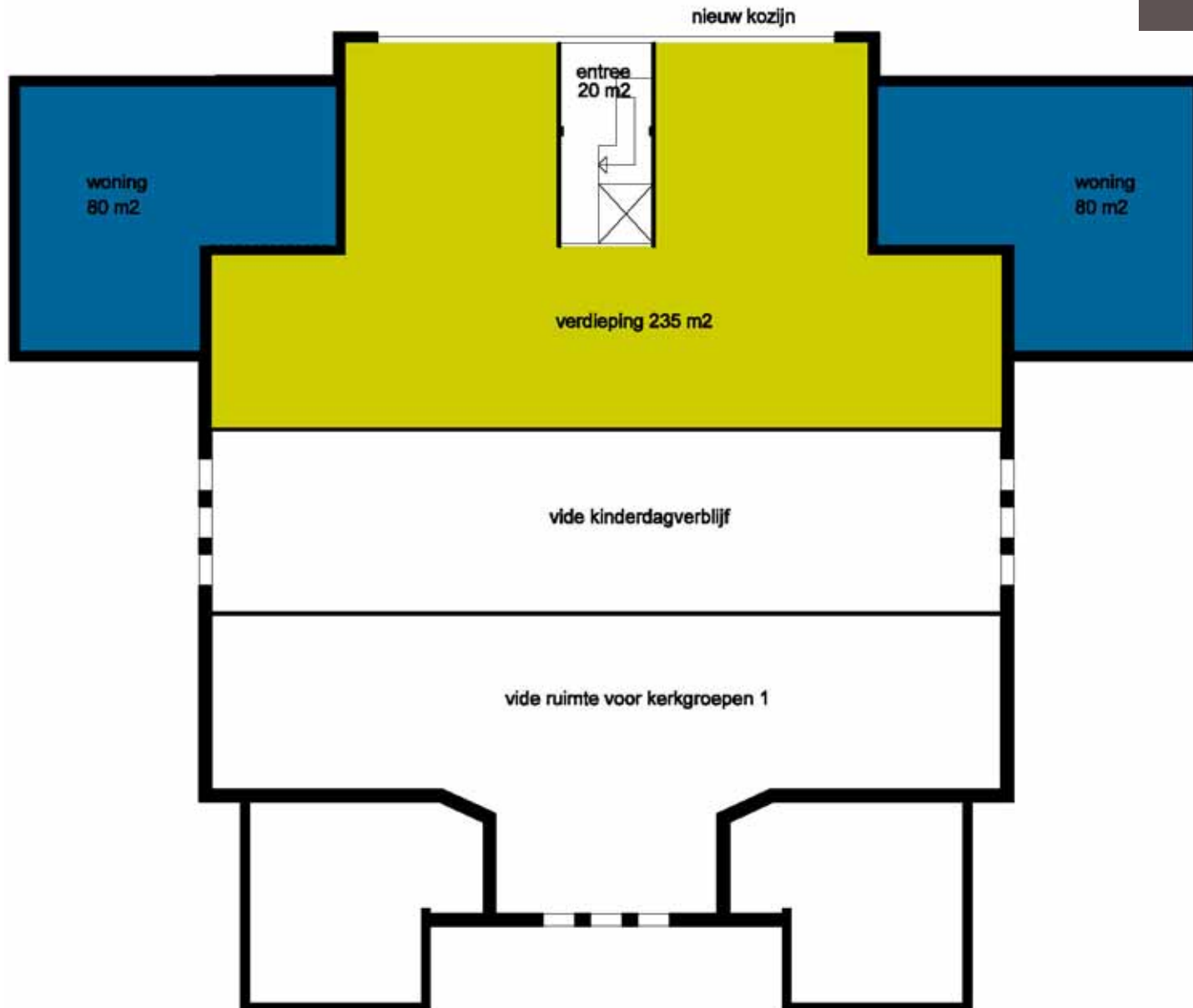


*Variant B 1° Verdieping*

Schaal: 1:200

status:

Studie

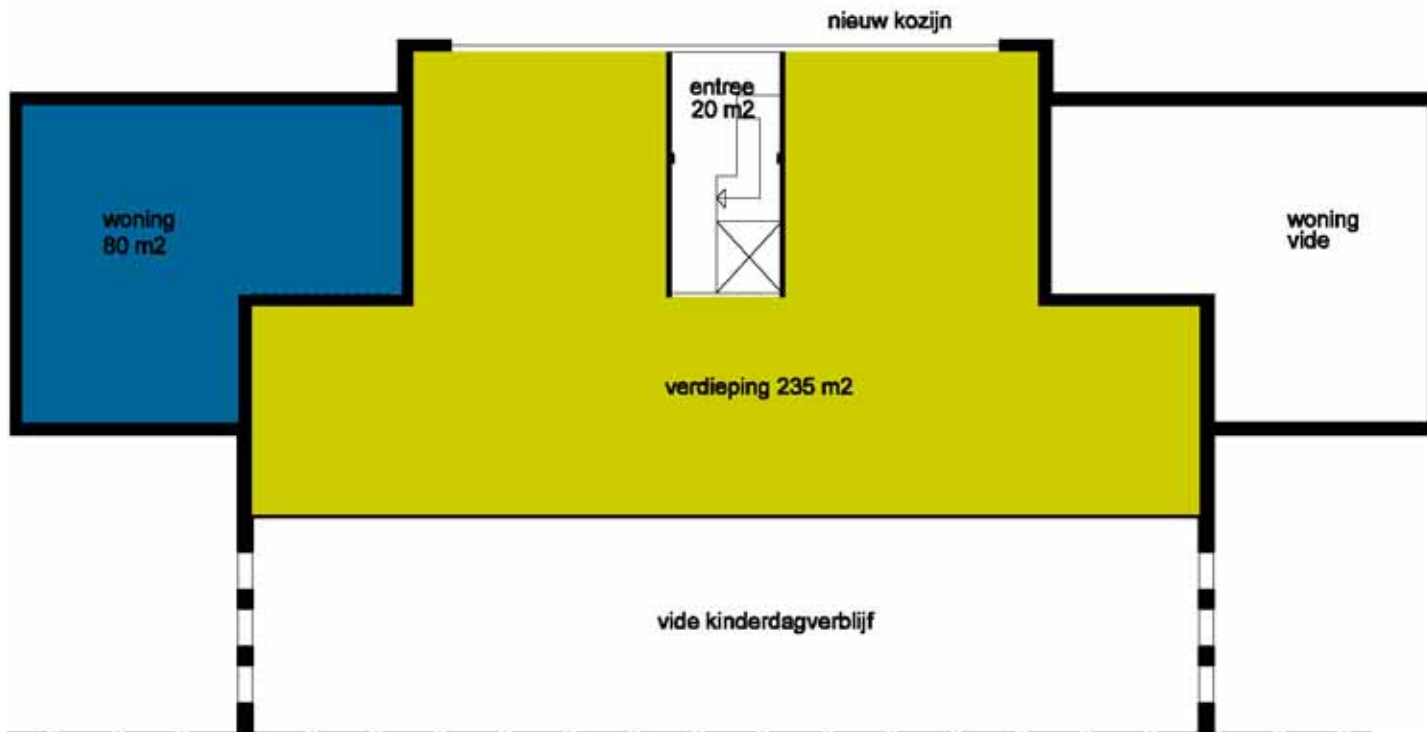


*Variant B 2° Verdieping*

Schaal: 1:200

status:

Studie

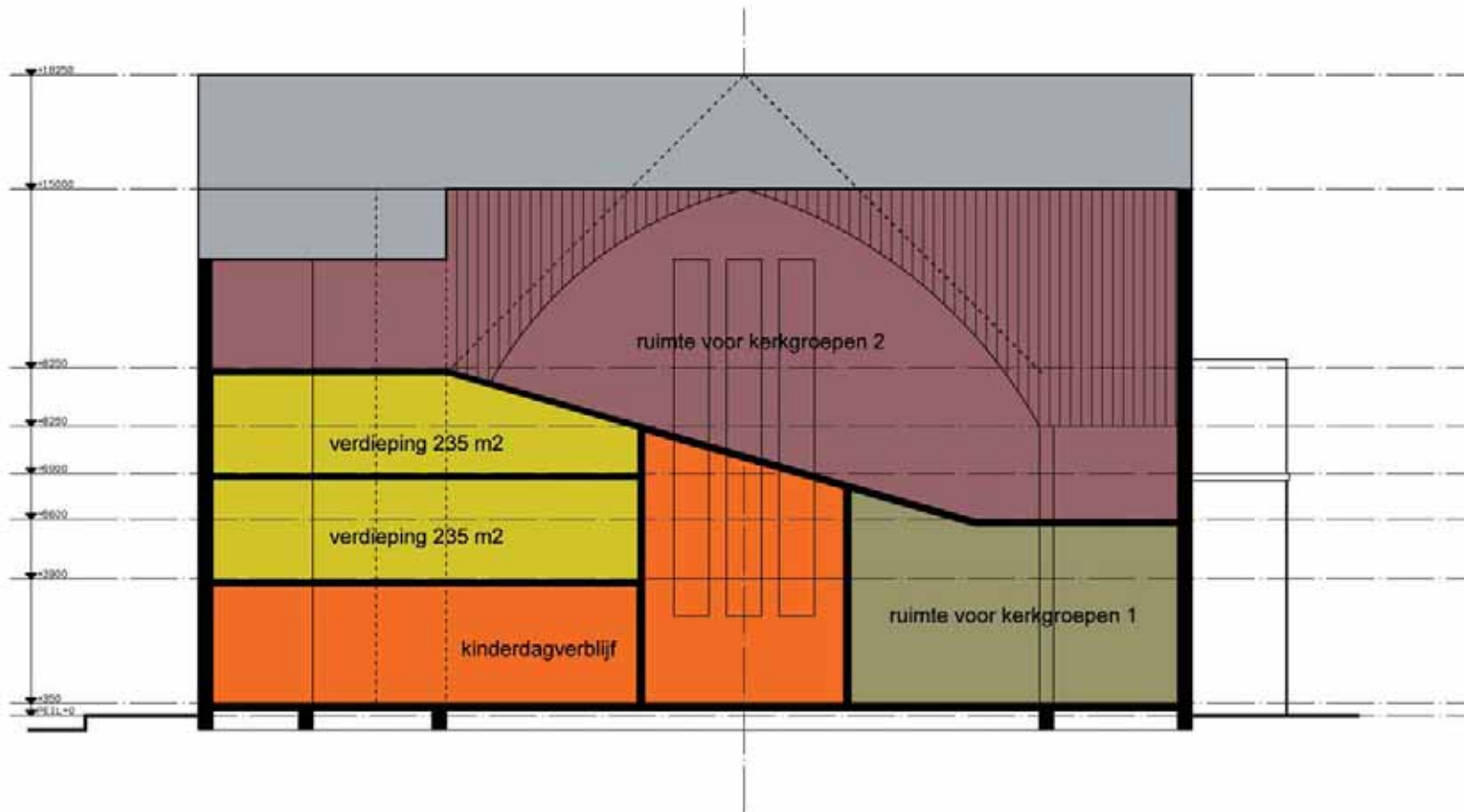


*Variant B Doorsnede*

Schaal: 1:200

status:

Studie

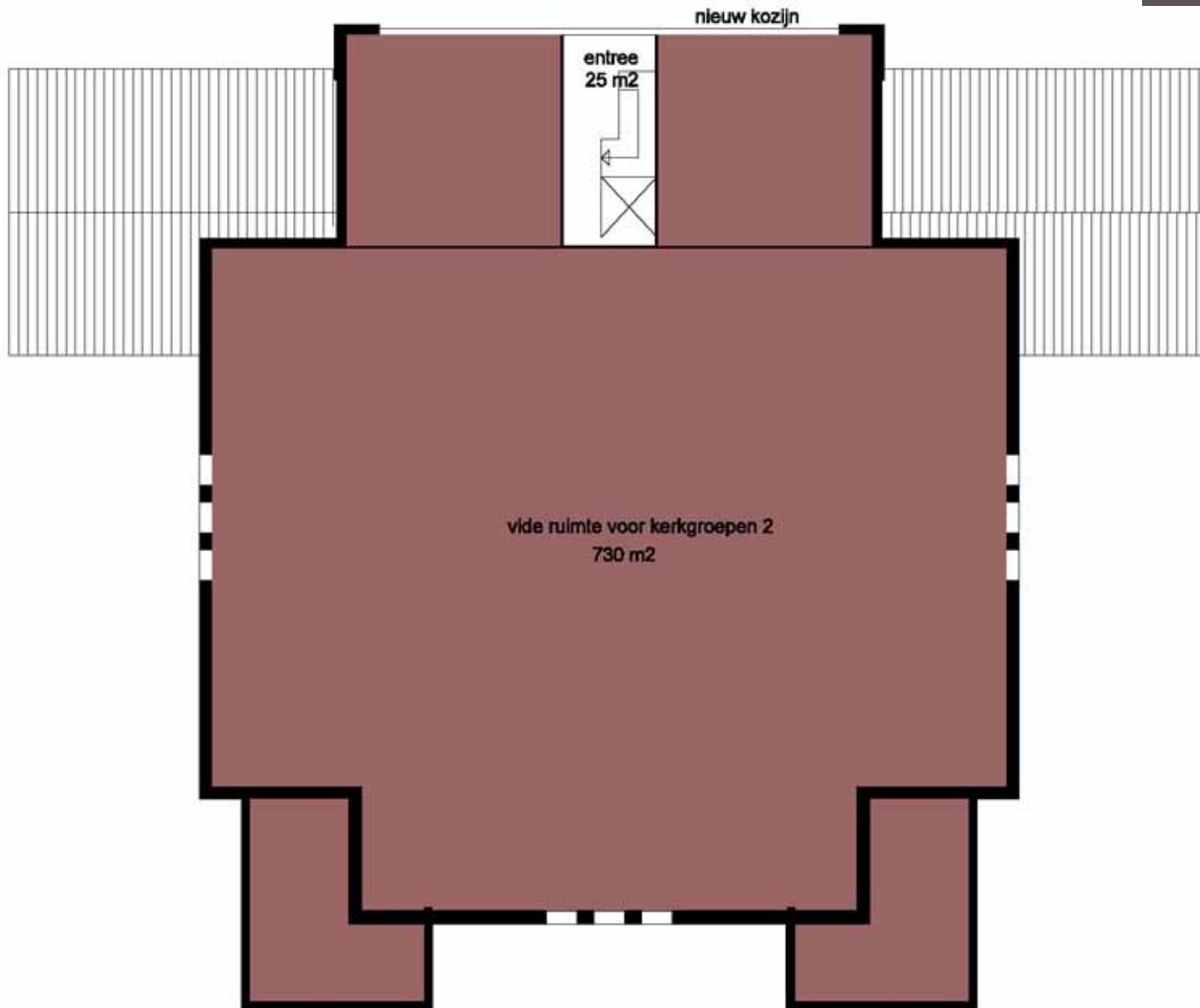


*Variant B 3° Verdieping*

Schaal: 1:200

status:

Studie



mama-architecten  
G.Bidloostraat 27  
2563 XC Den Haag  
Nederland

Marchel Ruygrok  
marchel@mama-architecten.nl  
+31 (0)70 360 5572  
+31 (0) 6 24601032

Vincent Jeanson  
vincent@jeanson.nl  
+39.3341125639

[www.mama-architecten.nl](http://www.mama-architecten.nl)



RELIPLAN

ADVIESGROEP VOOR MAATSCHAPPELIJKE OBJECTEN, KERKELIJK ONROEREND GOED, BIJZONDERE OBJECTEN

Buiksloterdijk 240  
1025 WE Amsterdam  
Tel: 020 636 58 89  
info@reliplan.nl  
[www.reliplan.nl](http://www.reliplan.nl)